

---

**IMPACT**  
Office Furniture

**IMPACT**  
Office Furniture

# CONTENT

ABOUT US	01
VISION, MISSION, VALUE	03
OUR BUSINESS	05
PRODUCTS & SERVICES	06
SERIES	07
MOTION	09
EPIC	13
EDGE	17
SQUARE	23
FOCUS	29
ECHO	37
META	43
LIGHT	47
MEGA	51
STREAM	57
STORAGE UNITS	61
EXECUTIVES	71
CHAIRS	97
CONFERENCE & TRAINING CHAIRS	115
COMFORT	119
WAITING SEATS	123
RECEPTION DESKS	125
RECEPTION DESKS	125
MODULAR TABLES	129
ACCESSORIES	133
OUR PROJECTS	135
BUSINESS PARTNERS	139

In 2008 impact founder decided to participate in the Egyptian market as first stage to the world wide plan, with impact office furniture he was capable to make a new standard in the Egyptian market based on two essential factors; customer's gaudiness and support.

From 2008 till now, impact team have met many challenges to set up their standards in Egyptian market by different segments, the strong clear vision of the team and the integrated study to the markets allow us to define our mission in two words; helping customers' to hit a good impact in the society.

# ABOUT US







## VISION

Make business space model to inspire and implement solutions to society issues the environment crisis, to become the most business startups centric company for business space solutions and office furniture, to become the world most followed company based on customer's experience and remarkable services.

## MISSION

Because of our creditability in delivery in time and excellent after-sale services, we would like to become one of the top five companies for business space services and office furniture in Egypt and acquire a good proportion in the middle east market. We planned to change after sale services concept to a partnership more than a services.

## VALUE

Impact values play an essential role in our business, also give our employees guidance for their work and a sense of security.

Our company value formed our culture and goals.

- Honesty
- Trustworthiness
- Quality
- Discipline
- Customer experience
- Helping and guidance

## OUR BUSINESS

Impact office furniture is a specialized Office furniture company with over 14 years experience in the industry. Our extensive inventory comprises over 150 premium products located in our show room and client's locations across Egypt and Middle east for our expert insights, technical abilities, personalized service and well-established customer relationships, we provide the perfect balance of targeted products and suitable price to meet all your working space needs.

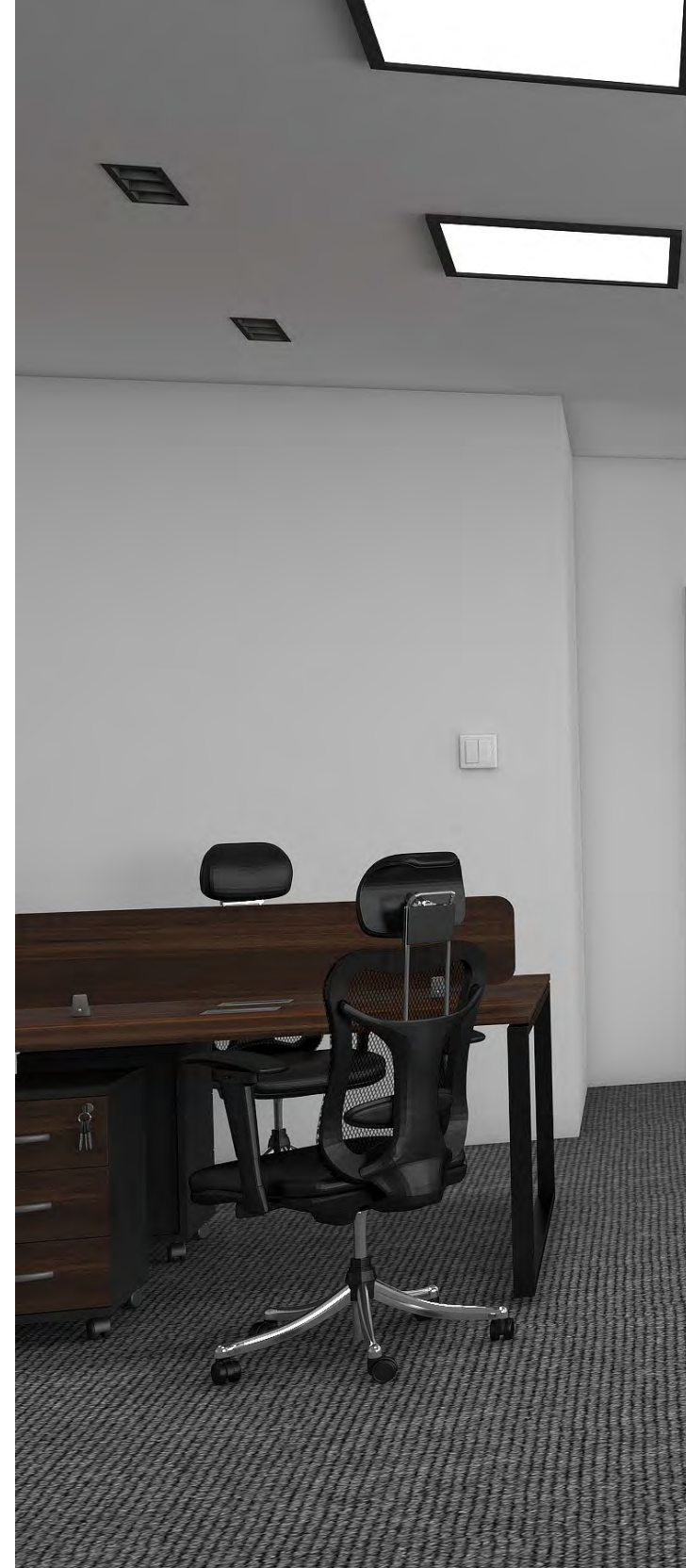


# PRODUCT AND SERVICES

We have been serving our customers with the widest range of in-house manufactured & imported office furniture, our catalogue shows the variety of our products in easy and time consuming way. The progressive, unique and eco friendly designs give our clients the abilities to participate with the society and the environment to achieve the most sustain benefit to their lives.

## SERIES

- Twelve different serieses to meet all your needs and tastes.
- High quality materials and extra ordinary finishing.
- Available in different dimensions to meet our business partner's needs.
- Variety color collection.
- Workstations designed to fit the optimum number of employees in a specific workplace to improve the work environment and can be manufactured in different dimensions.
- Whatever the area of your conference or meeting room we can offer the suitable table to fit on using our different models of meeting tables.
- Adding electric units, USB & HDMI inputs is an option.





# MOTION

Designed to add variety to your day, as you rotate between sitting and standing during your work tasks. Or, adjust your work surface to height that fits you best ergonomically.

	SINGLE MOTOR DESK	DUAL MOTOR DESK
Number of Motors	1 Motor	2 Motor
Carry Load	70 KG	125 KG
Collision Detection	No	Yes
Handset Controller	2 Buttons up and down	Touch screen with up to 4 memory positions
Colors	Black - Grey - White	Black - Grey - White
Bluetooth	No	Could be installed
Adjustable Height	710MM to 1210 MM	580MM to 1230 MM
Tabletop Length	1000MM - 1600MM	1200MM - 2000MM
Tabletop Width	500MM - 800MM	600MM - 800MM





- Laminated HDF top 24mm thickness covered with HPL Layer.
- Adjustable metal legs.



- Adjustable legs available in white, black & grey colors.

# EPIC

A contemporary design combines between originality in the massive beech wood base & the modern functional top.

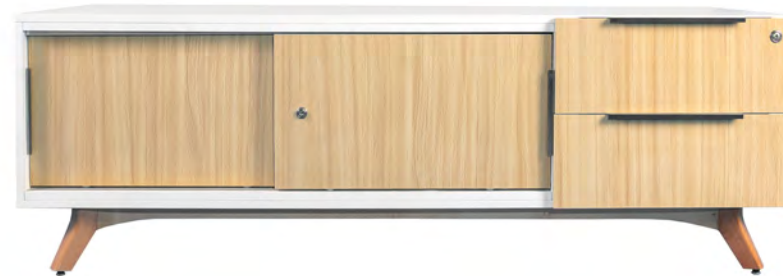






- Double top 24mm + 17mm MDF covered with HPL or polylac top.
- Massive beech wood legs with additional side desk includes in pedestal.
- Available in 180x90x75 cm - 200x90x75 cm - 240x100x75 cm.

- Low cabinet 4 doors.
- 160x40x95 cm.
- Beech legs.
- Also available in 2 doors.



- Side desk.
- 160x60x55 cm.
- 2 sliding doors.
- 2 drawers.
- Keylock.
- Beech legs.



- Workstation fit for any numbers of employees.
- 120x60 cm / person.
- 140x70 cm / person.
- Screens are available in different materials.
- Cable management.



- Meeting table in beech legs.
- 200x100 cm.
- 240x170 cm.
- 320x170 cm.
- Cable management.



- Round meeting table.
- Beech legs.
- Diameter 100 & 120 cm.
- Fit for 4 employees.



# EDGE

Edge series is here to deliver all your needs via a clean modern design, its designed in straight lines & sharp right angles, legs made of a tube box 50x50mm with a high-quality electrostatic painting.



- L-Shape desk.
- Mobile pedestal with central keylock.
- Cable Management.
- 120x140 cm
- 140x150 cm
- 160x160 cm.



Dimensions

- 120x60x75 cm / person.
- 120x70x75 cm / person.
- 140x80x75 cm / person.
- 160x80x75 cm / person.



- Workstations fit for any numbers of employee.
- Include Cables management.



Screens are available in:

- laminate MDF.
- Fabrics.
- Glass.
- Acrylic.
- Acoustic panels.







- 180x90x75 cm / 6 persons.
- 240x120x75 cm / 8 persons.
- 320x120x75 cm / 10 persons.
- 400x120x75 cm / 12 persons.
- 480x120x75 cm / 14 persons.

# SQUARE

Square series gives elegant impression to any place with reassuring stability by its customized legs, designed in straight lines & sharp right angles, legs made of tubes 50x20mm with a high quality electro static paintings.





#### L-Shape Desk

Desk sizes:

- 120x60 cm.
- 140x70 cm.
- 160x80 cm.
- 180x90 cm.
- 200x100 cm.

Side desk:

- 80x40 cm.
- 100x50 cm.
- 120x60 cm.

Diffrent designs of workstations which can fit for any number of employees according to the design & dimensions.

- Three kinds of workstations:
  1. Island Workstation.
  2. Linear Workstation.
  3. Raws Workstations.





- Meeting table 240x120 cm.
- Fit for 8 persons.
- Laminated MDF top covered with HPL layer.
- Metal legs in square design.



Conference Table:

- 400x120 cm / 12 persons.
- 480x120 cm / 14 persons.
- 560x120 cm / 16 persons.
- Include cable management.





# FOCUS

When sophisticated designs meet comfort & durability.



Focus desk with fixed side desk  
include storage & drawers

Desk:

- 120x60 cm.
- 140x70 cm.
- 160x80 cm.
- 180x90 cm.

Side:

- 80x40 cm.
- 120x40 cm.
- 160x40 cm.



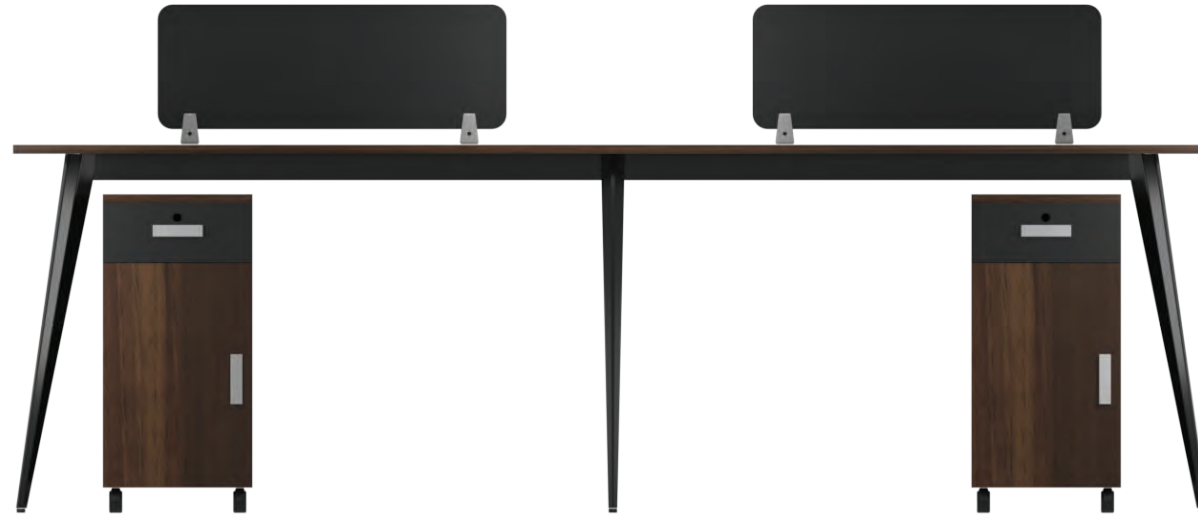
- Focus desk include side desk.
- Side desk 60x40 cm.
- Side desk design can be changed according to customer needs.



Focus desk design in curved desk top



Focus desk design in nickel chrome legs



- Island workstation in focus design.
- Different types of separators.
- Flexibility in dimensions.



- Island Focus workstations with fixed storage unit.
- 120x60 cm.
- 140x70 cm.
- 160x80 cm.

- Focus conference tables.
- Different color for HPL & legs.
- Cable management.





- Round meeting table.
- 80 cm.
- 100 cm.
- 120 cm.



# ECHO

Optimize modern furniture by reflected contemporary elegance and strong functionality through high quality of metal material.







- 120x60 cm.
- 140x70 cm.
- 160x80 cm.
- Desks with modesty pannel.
- Laminated MDF top 24 mm thickness covered with HPL layer.



- L-Shape desk with side include storage & drawers.

Desks:

- 140x70 cm.
- 160x80 cm.
- 180x90 cm.

Side:

- 120x40 cm.
- 160x40 cm.



- Echo workstation.
- Island design.
- Security glass separator or acrylic separators.
- Cable management.
- Include mobile pedestal with central key lock.



- Echo workstations with fixed drawers.
- 120x60 cm.
- 140x70 cm.
- 160x80 cm.



# META

Pieced together to create the configuration that best suits your needs.







Different designs for meta workstations

# LIGHT

Lighten up your working space.





- Light series manager desk design.
- In MDF top covered with HPL layer.
- Include side 80x40 cm with 1 desk drawer.
- 160x80 cm.
- 180x90 cm.
- 200x100 cm.

- Round meeting table on round metal legs.
- 80 cm.
- 100 cm.
- 120 cm.





- Light series employees desk design.
- In MDF top covered with LPL layer.

Desks:

- 120x60 cm.
- 140x70 cm.
- 160x80 cm.

Side:

- 80x40 cm.
- 100x50 cm.
- 120x60 cm.



# MEGA

Stylish comfortable and most of all punctual. The mega series made of laminated MDF top & body 24mm thickness covered with LPL layers.

Desks, conference tables & workstations have the ability to reassemble and assemble several times with no effect in wood.



- L-Shape desk include drawers unit from one side & meeting unit in the other side.



- Mega series L-Shape desks.
- All in laminated MDF 24mm thickness covered with LPL layer.







- Conference table in Mega series.
- All in laminated MDF top body  
24 mm thickness covered with HPL layer.
- Many designs.
- Variable dimensions.



- Rectangle conference table in Mega series.
- Laminated MDF 400 mm covered with HPL layer.
- 240x120 cm / 8 persons.
- 320x120 cm / 10 persons.
- 400x140 cm / 12 persons.
- 480x140 cm / 14 persons.

# STREAM

Stream series offers a great style presence other than its real solidity. Stream series have security glass top 10mm thickness either back painted or colorless.





Desk:

- 120x60 cm.
- 140x70 cm.
- 160x80 cm.
- 180x80 cm.
- 10 mm thickness security glass.
- Back painted .
- Metal legs.



- Combined design desk between Strem series top & Square series legs.
- 140x70 cm.
- 160x80 cm.
- 180x80 cm.



- Round meeting table in security glass top & beech wood legs.
- 80 cm.
- 100 cm.
- 120 cm.

## STORAGE UNITS

- Mobile Pedestals with a central key lock useful for individuals.
- Shannon for hanging files mostly used in the finance and the HR departments.
- High & low cabinets for saving documents.
- Metal lockers used in factories for workers and in gyms.
- Light, medium and heavy metal racks for products.
- All storage units available in wood or metal or both.





# CUPBOARD



LC - 120/O



LC - 120



LC - 120/S



LC - 80



LC - 80



HC - 210/D



HC - 210/G



HC - 210/GF



HC - 210



HC - 210



LC - 320/G



LC - 90/D



LC - 90/S



HC - 160/G



H - 18



H - 60/D



H - 120/S

# MOBILE PEDESTAL

Mobile pedestal

- 3 drawers.
- Central keylock.
- Available in soft close.
- Any color.



DR - 3



DR - 3



CPU/D



DR - 3/S



DR - 4/P

# MOUNTED LOCKER

- Locker in laminated MDF.
- Can be divided into variable & spaces.
- With separate keylock for every desk.
- Available digital locks.



ML - 1880/6



ML - 1880/6

# SHANNON

- Shannons for hanging files.
- Available in both MDF & metal.
- With central keylock.
- In any color.



SH - 2  
SH - 3  
SH - 4



SH - 2D/M  
SH - 3D/M  
SH - 4D/M



SH - 2/M



SH - 3/M



SH - 4/M

# METAL CUPBOARD

- Available in metal, glass & MDF. doors or without doors.

- Available in:

- 80x40x80 cm.
- 120x40x80 cm.
- 160x40x80 cm.
- 160x40x80 cm.
- 200x40x80 cm.



HC - 200/MO



HC - 200/M



LC - 80/M



# LOCKER

- Metal lockers available in any color.
- Can be divided into variable spaces.
- Separate keylock for each door.
- Available digital locks.



2 Doors



1 Door



2 Doors



6 Doors - 5 Doors - 4 Doors -  
3 Doors - 2 Doors - 1 Door



6 Doors



---

# EXECUTIVES



Square







Eternity







Legacy





Integrate



Global





Prime





Visual





Raven



Volume







Komo



Matrix









Alpha



## Executive Conference Tables Designs



Executive Cupboards Designs



# CHAIRS

- A wide range of chairs models begins from the basic employee's chairs to the high ergonomic medical chairs.
- Colleague's chairs, visitor's chairs and meeting room chairs, you will find the suitable chairs for all uses.
- High quality components with very high-quality finishes in leather, fabrics and mesh.



01 | N-EX.H



01 | N-EX.L



02 | Mesh.H



02 | Mesh.L



02 | Mesh.W



03 | DM-002.H



03 | DM-002.L



04 | EH-HAM.H



04 | EH-HAM.L



05 | Spanish.H



05 | Spanish.L



06 | Logic.H



06 | Logic.L





07 | Premium.H



07 | Premium.L



08 | Wendy.H



08 | Wendy.L



09 | B09.H



09 | B09.L



10 | B08.H



10 | B08.L



10 | B08.W



11 | 2320.H



11 | 2320.L



12 | B07.H



12 | B07.L



12 | B07.W



13 | 3069.H



13 | 3069.L



14 | B22.L



14 | B22.W



15 | B003.L



15 | B003.W



16 | EU1001 H



16 | EU1002 W



16 | EU9002 W



17 | EGO202.H



17 | EGO202.L



17 | EGO202.W



18 | EGO212.H



18 | EGO212.L



18 | EGO212.W



19 | EGO102.L



19 | EGO102.W



20 | EGO997.H



20 | EGO997.L



20 | EGO997.W



21 | B24.H



21 | B24.W



22 | B21.H



22 | B21.L



22 | B21.W





23 | B22.H



23 | B22.L



23 | B22.W



24 | B004.H



24 | B004.L



24 | B004.W



25 | Madrid.L



25 | Madrid.W



26 | B-036.L



26 | B-036.C



26 | B-036.W



27 | A3008.H



27 | A3008.L



28 | Rocco.H



28 | Rocco.L



28 | Rocco.W



29 | EGO-404.H



29 | EGO-404.L



30 | B23.H



31 | DM-81.H



32 | DM-20.H



33 | DM003.L



34 | SH-112.L



35 | B-980.L



36 | D-308.W



37 | I220.W



38 | Guest.W



## CONFERENCE & TRAINING CHAIRS

- Impact offers two different models of conference chairs.
- Writing pad can be added.
- Available in both leather or fabrics.
- A writing pad chairs used in training centers and educational places.
- Stackable model is available.



01 | Spanish Training Chair

- Red leather.
- Fiber cover.
- Handwriting pad.



02 | Deluxe Conference Chair

- Blue fabric.
- Wood cover.
- Handwriting pad.



03 | Spanish Conference Chair

- Grey leather.



04 | Deluxe Conference Chair

- Red fabric.
- Wood cover.
- Handwriting pad.



05 | Deluxe Conference Chair

- Blue leather.
- Wood cover.
- Handwriting pad.



06 | Conference Chair

- Red fabric.
- Fiber cover.
- Include cup holder.



01 | Mesh Back Training Chair



02 | Madrid Training Chair



03 | Stackable Training Chair



04 | Plywood Training Chair



05 | Italian Training Chair



06 | Ego Training Chair







## COMFORT

- Selected collection of comfort and stylish sofa sets.
- Mostly used in receptions & indoor waiting areas.
- Choose either black or colorful leather.
- Available as sets or individuals.



01 | B-19/1S



02 | B-2/1S



03 | B-12/1



04 | B-19/3S



05 | B-2/2S



06 | B-12/3S



01 | B-25/1S



02 | CHR/1S



03 | B-26/1S



04 | B-25/2S



05 | CHR/3S



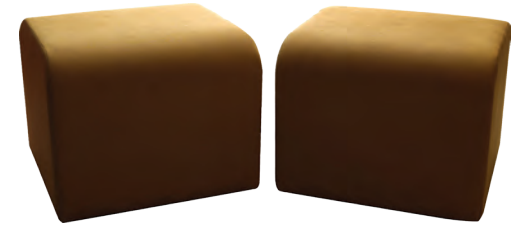
06 | B-18/3S



01 | Circle Pouf



02 | 5 Ribs Pouf in Fabric



03 | Square Pouf



04 | Circle Pouf



05 | 5 Ribs Pouf in Fabric



06 | Triangle Pouf



## WAITING SEATS

- Selection of a heavy-duty metal seats mostly used in public places.
- Available with upholstery.
- Available in many colors.



01 | MS-1



02 | MS-2



03 | MS-3



04 | MS-1/L



05 | MS-2/L



06 | MS-3/L



## RECEPTION DESKS

- Variety of reception desks and counters to express the personality of your company using different materials.
- Able to manufacture special designs.
- Can add your company logo according to the design.

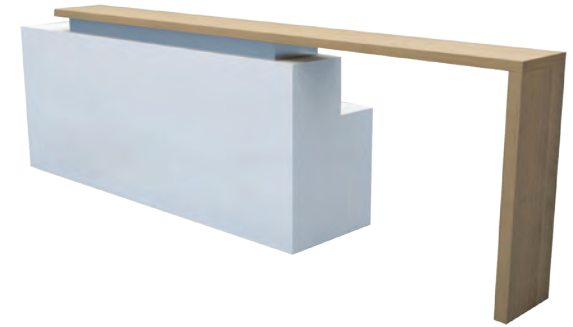




01 | RD01



02 | RD02



03 | RD03



04 | RD04



05 | RD05



06 | RD06



RD07



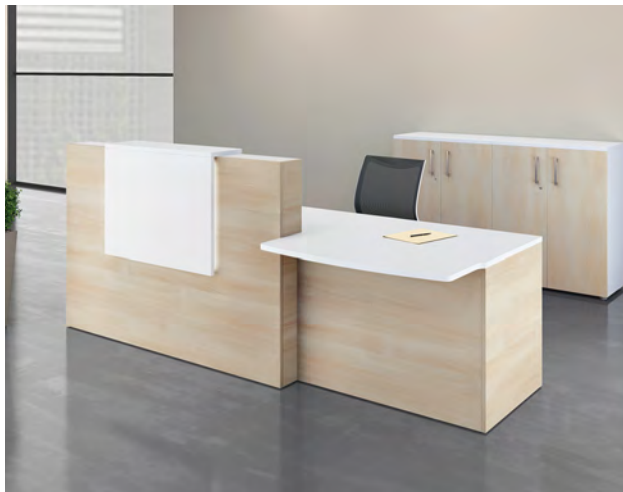
RD08



RD09



RD10



RD11



RD12



RD13

# MODULAR TABLES

Multitasks tables in innovative designs.



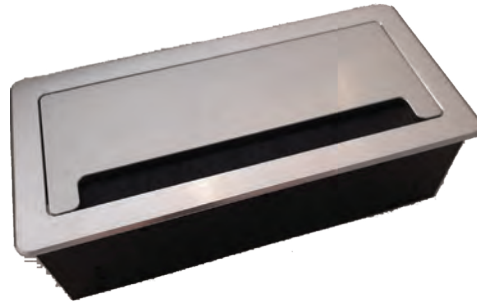
- Tavolo folding table.
- Available in:
- 120x60 cm.
- 140x70 cm.
- 160x80 cm.







01 | Vertebrae



02 | Large Electric Box



03 | Small Electric Box



04 | Wireless Charger



05 | Monitor Arm



06 | Keyboard Tray



# ACCESSORIES

- Impact supplies some different accessories which facilitate the using of the furniture to get the maximum benefit from them.



# OUR PROJECTS





# OUR PROJECTS





# BUSINESS PARTNERS

Business Partners usually reflect the image of one another, we cared to much to be selective with who we shake business hands with... we at Impact, tend to pick the best partners in terms of proficiency and the quality of services they provide!



Schindler



MOUNTAIN VIEW



Mercedes-Benz



Kandil Egypt



HYDE PARK  
NEW CAIRO



HASSAN ALLAM  
HOLDING











#### HEAD OFFICE

21 El Taief Street, Dokki, Giza, Egypt  
Telephone : (202) 376 05 725  
Fax: (202) 333 88 424

#### SHOW ROOM

69 Syria Street, Mohandesin, Giza, Egypt

Info@ impactofficefurniture.eg  
01220008882



Impact Office Furniture

[www.impactfurniture.com.eg](http://www.impactfurniture.com.eg)

**IMPACT**  
Office Furniture

[www.impactfurniture.com.eg](http://www.impactfurniture.com.eg)

---